



THE MBA SOFTWARE TIMES

May, 2009

8.4 UPGRADE ...A SNEAK PEAK

>Added the system-wide ability to email PDF attachments of invoices, check details, statements, check registers, direct deposit stubs, Financials.

>Created an option for electronic or ACH Payments in AP.

>Added the capability to reprint checks that can be done after posting.

>Options added to create CSV files for all Distribution reports

>Made System Manager navigation easier with numerous enhancements including increased font size for all browses, a new PDF button on preview

The MBA Software Times

Hello, everyone!

As you read this version of the MBA Software Times, experts are predicting that the economy has seen its worse and the markets are on the upswing. Just like you, MBA has had to work smarter and more efficiently and, as a result, we are in better shape to continue to provide our customers with the top tier customer experience you are accustomed to and the most functional and user friendly software upgrades each year.

Speaking of upgrades, awhile back we sent an email to all customers asking what new features you wanted in this year's Series 3 upgrade. We received an unbelievable amount of feedback and, as a result, we will be shipping the **most comprehensive and feature-laden upgrade ever!** As you know, our Customers dictate the direction of our product and this year is absolutely no exception. Look in the green box to the left for just a sampling of new features you will see in the Series 3 8.4 upgrade.

In addition, our Distribution (Inv, PO & OE) customers have demanded that we include a host of new features & reports to that product, as well. So, we are excited to announce that our **newly enhanced Distribution product will be included in this year's Series 3 8.4 upgrade!**

The 8.4 upgrade is due to ship in the mid July timeframe so please be on the lookout for our Upgrade Order Form mailed in the next couple weeks. As always, there will be an "early-bird special" included.....

We continue to appreciate our partnerships with all MBA customers. Please call me at 800-431-1416 x101 and let me know how I can help in any way.

John Steveken
President

screens, etc.

>Ability to save reconciliation for more than 1 bank account.

>Distribution now easier to use with new reports and functionality for Inventory, Purchase Orders and Order Entry.

...and many, many more!

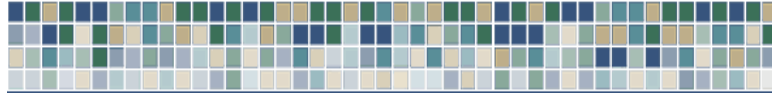
****Look for the 8.4 Upgrade Form in the mail the week of June 1!!****

1-800-431-1416



“only” new MBA Forms guarantees Series 3 compatibility

Please be aware that the MBA Forms Division is the only place that has Series 3 in house and has tested all forms. **No other forms provider (including MHC) can test with MBA!** With the great new pricing and promotions going on, please make sure you make note of the new phone number



****New Products****

MBA Human Resources Application

Aligning with our long time development partner, RadFusion, we offer an HR solution that allows you to easily track, report, and analyze all employee data from application to end-of-employment. This MBA add-on is a fully functional, stand alone HR package that is tightly integrated to MBA Series 3 Payroll. The solution is designed so that, like all MBA products, it is easily customizable to fit the needs of your employee environment and is priced very affordably.

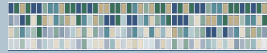
MBA HR makes it easy to add and maintain Company Branches, Departments, Policies, Locations, Teams, Pay Grades, Job Categories and Descriptions, Absence and Time Off policies, EEOC codes, Status codes, Benefits, Company Training and any custom fields you need. Tracking employee data can be a challenge but, with quick and easy navigation, MBA HR & MBA Payroll just became an integrated one-stop shop!

Call us at 1 800 431 1416 x3 for a demo

ClockOut 365 –Time & Attendance software

The most valuable asset to any successful company is their workforce. Yet many companies still utilize out-dated and unreliable methods in labor management. TimeClock 365 is a completely

for the MBA
Software Forms
Division
1-800-544-3427
www.mbasoftforms.com



OnLine Data Backup service takes off!!

Since announcing our new OnLine Data Backup service back in November, there has been huge demand! Many MBA customers are resting assured that their most important company data is being backed up on a daily basis to secure off-site servers.



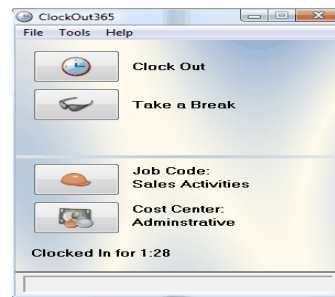
Attention Printers! MBA adds Print Estimating module-

In cooperation with our long time partner, Computer Dynamics, MBA now has over 50 printing and graphic companies using Series 3 integrated to the ProShop Estimating software.

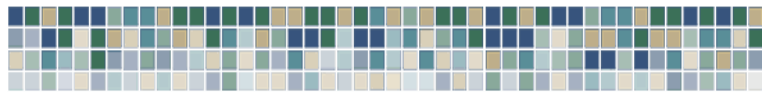
“The integration

scaleable, intuitive, time and attendance solution designed to increase workforce productivity. As with all MBA products, there is tight integration to MBA Payroll solution. Also, the product can be customized to fit any business requirement.

ClockOut 365 enables you to efficiently manage labor resources, automate business processes, manage compliance, eliminate administrative tasks and solve real-world business challenges. ClockOut SMB edition is available for companies with less than 100 employees. It is powerful, functional and priced at a point that makes sense for your market.



Give us a call and we will be glad to show you a demo. 1 800 431 1416 x3



Customer Referral Program

MBA is happy to reward any Customer who refers business our way. We will write a check to you for an amount equal to 20% of the purchase price of the software!!!!

of the ProShop estimating module and the accounting of Series 3 allows me to run our business in as efficient a manner as can be. MBA listens to our needs and provides me with the control I need in the competitive world of printing graphics”.

Norma Meiner
Solution 3 Graphics

Give us a call for a demo!



CUSTOM MODS

MBA Consulting performs any custom modification to your MBA Software.

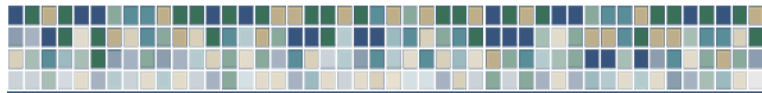
Contact us for a quote!

sales @mbasoft.com

1-800-431-1416

CHECK OUT OUR NEW WEBSITE!!

www.mbasoft.com



****Tech Tips ****

1. Spring House Cleaning: MBA has options to purge your data in A/R, A/P, Payroll, Inventory, Purchase Orders, and Order Entry. You can purge by date ranges, vendors, etc. Purging can help your reports and processing run faster since there will be less data that our programs need to read. If you are worried about losing the purged data, make a backup of it, or copy it to a company code called 'OLD', so that it will still be available to you.
2. Support still gets too many calls from customers who have no MBA data backup system in place, and have had severe hardware problems that have corrupted their MBA data. The only choice for these customers is to re-enter all of the data that is missing. One customer had 6 months of data that she had to re-enter into MBA because she had no backup. Call our sales department and have them set you up on our on-line backup service. For only \$20 per month, you can have the peace of mind that your data is being backed up and can be restored when needed.
3. In Accounts Payable, you can save yourself some data entry time and cut down on mistakes by setting up default expense accounts in each vendor's account. Since many vendors use the same account for all of their invoices, you can go to Vendor Maintenance and enter default vendor expense account(s) that will show up whenever you enter an invoice for that vendor.

Support is closed these dates in 2009:

Memorial Day: Monday, May 25

Fourth of July: Friday, July 3

Labor Day: Monday, September 7

Columbus Day: Monday, October 12

Thanksgiving Day: Thursday/Friday, November 26, 27

Christmas: Thursday/Friday, December 24, 25

