

SERIES³

ACCOUNTING SOFTWARE
FOR WINDOWS™

REPORTS:

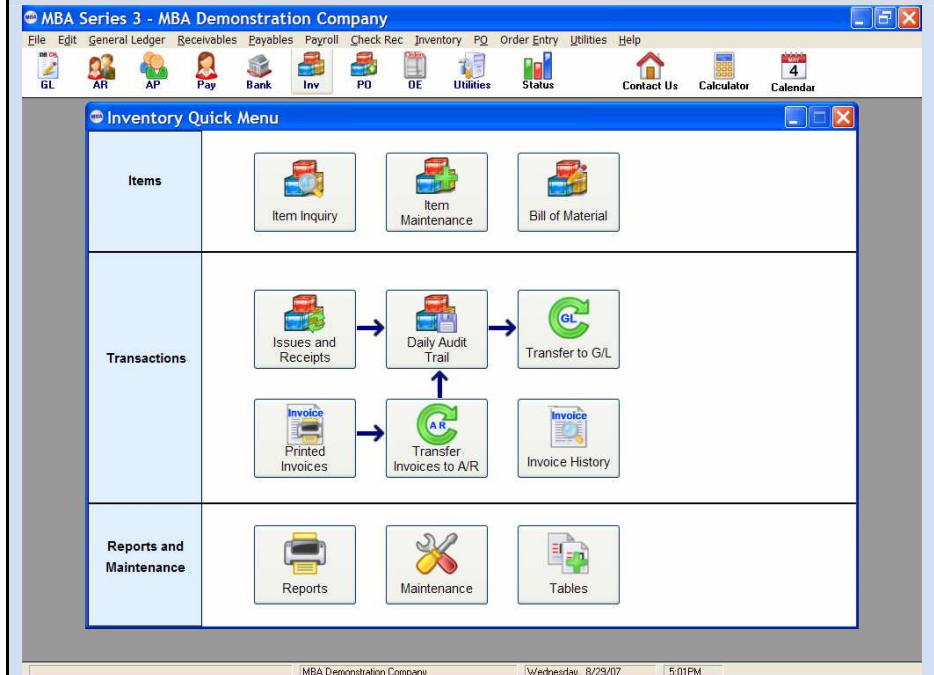
Reports may be printed, previewed, written to PDF files, or written to text files

- Activity Log
- Audit Trail
- Detail Item List
- Item Exception
- Update Price/Cost
- Update Inventory Control Quantities
- Inventory Investment Analysis
- Inventory On-Hand Cost
- Inventory Performance Analysis
- Item Cost Inflation
- Item Transaction History
- Physical Inventory Sheets
- Physical Inventory Audit Trail
- Price List
- Serialized Items
- Bill of Materials (BOM)
- BOM Requirements



5409 Nicollet Avenue
Minneapolis, MN 55419
Telephone: 612.825.3315 • 800.431.1416
Fax: 612.825.3245 • website: www.mbasoft.com

INVENTORY



The MBA Inventory Control module provides accurate and timely multiple warehouse control by tracking product usage and costs. You can maintain your products at optimum levels, eliminating over or under stocking of goods.

The module provides the needed flow of information by monitoring inventory issues, receipts, item costs and prices. By interfacing with the MBA Sales Order Entry and Purchase Order modules, it automatically adjusts on-hand, on-order and allocated quantities.

Invoices can also be generated from the Inventory module. Both laser and continuous feed forms can be printed and transferred to the Accounts Receivable module.

The SERIES 3 Inventory module also contains a Bill of Materials module that allows you to build finished good products from components.

Inventory produces a detailed or summary subsidiary ledger which can be posted automatically to the General Ledger system.

FEATURES

SERIES INVENTORY

ITEM INFORMATION	<ul style="list-style-type: none">• Item/part numbers can be 20 characters long with up to 150 characters of description• Standard and Average Costing methods• Multiple locations/warehouses can be used for tracking item information• Items can be transferred from one location to another• Notes per item• An Item Inquiry screen gives you easy access to view all of the item information including: on-hand quantities, costing, usage, serialized items, and transaction history• 6 user defined fields• Automated updating of prices/costs
INVENTORY TRANSACTIONS	<ul style="list-style-type: none">• Item issues and receipts• Record physical inventory counts• Daily Audit Trail keeps track of all of your transactions for transfer to the General Ledger module• Transfer Inventory transactions to the General Ledger and Accounts Receivable modules
PRINTED INVOICES	<ul style="list-style-type: none">• Laser and continuous feed invoice forms can be used• New items/customers can be added during invoicing• Item/customer lookups are available during invoicing• Invoice history allows you to look up invoices and reprint them• Items can be sold from multiple warehouses on the same invoice• Batches of invoices can be transferred to Accounts Receivable for billing
REPORTING	<ul style="list-style-type: none">• Print, Preview, or write your reports to a PDF file• Detail item list, audit trails, price/cost, physical inventory, item transaction history, BOM requirements, and the item price list are just a few of the many reports that enable you to track the your item on-hand quantities, costs and pricing
TABLE LOOKUPS	<ul style="list-style-type: none">• Just a click of a button gives you a lookup of your item, customers, dates, etc. from within the data entry screens
IMPORT/EXPORT UTILITIES	<ul style="list-style-type: none">• Easily import/export your data using our powerful utilities